

N  
7260  
S46  
CHM

S

Spink and sons  
A selection of oriental  
works of art

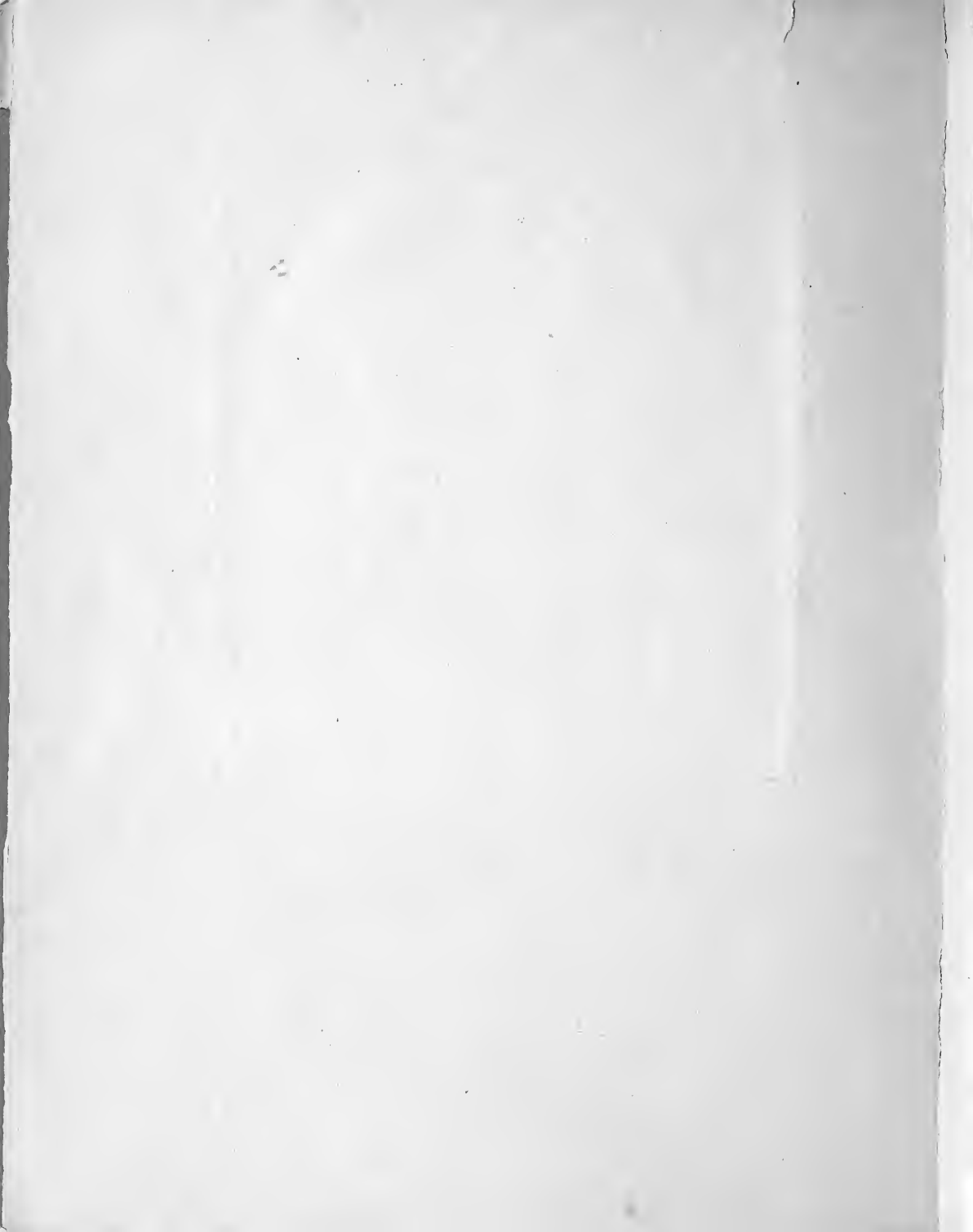
M  
730  
7575



739  
S757



*18<sup>th</sup> Century Imperial Lacquer Plaque.*



N  
1260  
546  
CHM

A  
Selection of  
ORIENTAL WORKS of ART

*On view at*

SPINK & SON'S GALLERIES

5, 6 & 7, KING STREET, ST JAMES'S.

LONDON, S.W.1.

ESTABLISHED  
1772.



**I**N presenting their sixth Brochure on Oriental Art Messrs. Spink & Son, Ltd., have adhered to the enlarged form in which it was issued last year and they hope that the present publication will receive as kindly a reception as that accorded its predecessors.

As some 17 sections are dealt with, it has only been possible to illustrate a few pieces in each series compared to the very wide selection on view at the present moment in the Company's Galleries. It is respectfully suggested, therefore, that those who are unable to visit these Galleries should write for photographs, descriptions and prices of further specimens in those series in which they are interested. Such particulars will always be gladly forwarded free of charge.

Owing to the ever growing enthusiasm aroused over all phases of Oriental Art of the classic periods, i.e., those up to the end of the 18th Century, *genuine* specimens are becoming increasingly difficult to obtain. For this reason and for the fact that the authenticity of every piece is fully guaranteed by a firm whose record now extends over 153 years, a perusal of this Brochure will well repay anyone to whom this most fascinating of all the Arts appeals.

*For index see page 75.*

739  
39590

2774. Imperial wine vessel of unique size and superb quality, carved from a block of translucent seaweed-green jade. From the Summer Palace, Peking, 1860. Height 15½ ins. 18th Century. £675.

11577  
3



2645. Figure of a court official in white jade mottled with brown. Height 5 ins. KIEN-LUNG, 1736-1795. £18.



2996. Graceful carving in white jade of a goddess holding a large gourd on her shoulder. Unusual subject. Height 5½ ins. KIEN-LUNG, 1736-1795. £16.



2038. White jade seated mythical animal. A simple carving of fine quality. Height 3½ ins. 18th Century. £15.



2235. Small vase of archaic bronze form in fine white. Height 4½ ins. KIEN-LUNG, 1736-1795. £15.





2994. Shou-Lao, god of longevity, and an attendant standing under a tree, the whole carved from one piece of white and grey. Height 4 ins. 17th Century. £17.



2971. 'Burnt' jade carving of a boy carrying a lotus spray. Height 4 ins. Early 18th Century. £22.



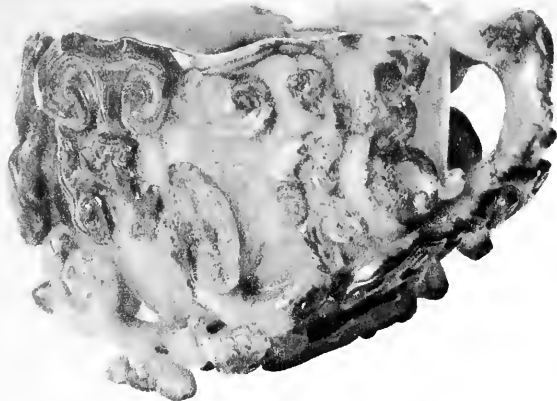
3010. Vase in greyish white shaped as a tree-trunk and carved with a stag, crane, etc., the emblems of longevity and good fortune. Height 6½ ins. KIEN-LUNG, 1736-1795. £18.



2964. White jade carving of a vase of archaic shape with a flowering prunus tree by the side. Height 5½ ins. KIEN-LUNG, 1736-1795. £17.



3025. Vase of superlative quality carved from a single block of rich green jade. From the Summer Palace, Pekin. *Height 12 ins.*  
Early 18th Century.  
**£425.**



3003. Ritual cup in greyish white mottled with rich black and carved with the fungus of immortality. *Height 3½ ins.*  
KIEN-LUNG, 1736-1795.  
**£75.**



892. Dark green jade spill-vase carved with a continuous landscape and figures. *Height 4½ ins.*  
KIEN-LUNG, 1736-1795.  
**£110.**



2361. Oval cup shaped as a fruit in rich even olive green. *Length 7½ ins.*  
KIEN-LUNG, 1736-1795.  
**£55.**



2859. Vase of quadrangular form with openwork fish-tail borders, in fine white jade. *Height 7 ins.*  
KIEN-LUNG, 1736-1795.  
**£47.**



1690. Vase of archaic pattern in greyish white jade. Fine quality. *Height 6½ ins.*  
KIEN-LUNG, 1736-1795.  
**£37.**



2322. Vase of exquisite quality and extreme thinness, delicately carved with flowers and leaves in low relief over the entire surface.

*From the Revesby Abbey Collection. Height 8 ins.*

KIEN-LUNG, 1736-1795.

**£150.**



2865. Piebald horse bearing the Sacred Books,  
finely carved in pistachio green and white  
jade. Very rare colour.  
*Length* 5½ ins.  
KIEN-LUNG, 1736-1795.  
**£75.**



2509. Crane, holding a lotus spray, carved  
in pale yellow jade.  
*Height on stand* 7 ins.  
KIEN-LUNG, 1736-1795.  
**£45.**



3006. Wine vessel of simple form in greyish jade mottled with rich brown.  
*Height 4½ ins.*  
17th Century.  
£65.



2998. A Bodhisattva seated in a cave, finely sculptured from a block of dark grey green. A Museum specimen.  
*Height 8 ins.*  
MING Dynasty, 1368-1643.  
£48.

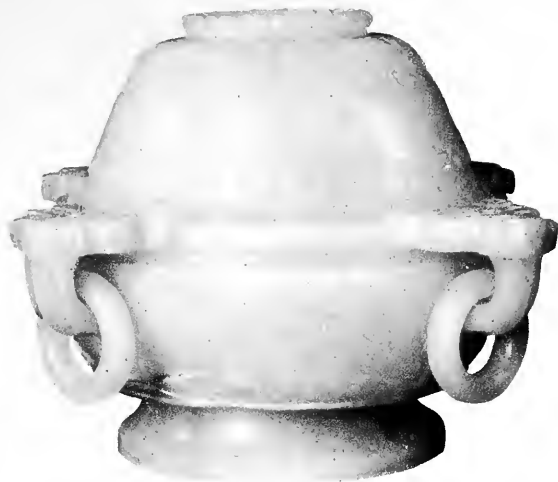


3034. Spill vase of finest quality and unusual colour—a delicate greyish white merging into brown. A very charming and artistic example. *Height 7 ins.*  
KIEN-LUNG, 1736-1795.  
£42.



3027. Sacred horse, carved in yellowish jade, shaded and mottled with brown. An imposing carving of great simplicity and strength. From the Summer Palace, Peking. Length 8 ins. 17th Century. £145.





2323. Bowl and cover of a fine white colour, the former fitted at equal distances with four loose ring handles. A Museum specimen.

*Height 5 ins.*

KIEN-LUNG, 1736-1795.

£175.



2466. Incense-burner of a soft grey-green colour with brown mottlings and with openwork lid. A boldly carved specimen in the Chinese taste.

*Height 6 ins.*

MING Dynasty, 1368-1643.

£175.

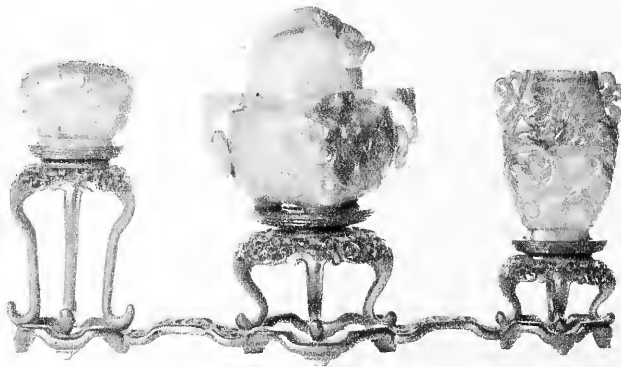


2267. A fine standing figure of Kwan-yin, goddess of Mercy, in greyish-white jade. Fitted as an electric lamp with silk shade.

Total height 20½ ins.  
KIEN-LUNG, 1736-1795.  
£65.



2176. Vase in white jade carved with a hydra. Height 6½ ins.  
KIEN-LUNG, 1736-1795.  
£30.



2948. Miniature altar set in rich translucent green. A fine and rare example of great beauty. Height of incense burner, including stand, 5 ins.  
KIEN-LUNG, 1736-1795.  
£92.



3023. A landscape, superbly carved in wood and embellished with white jade figures. Height 23 ins.  
18th Century.  
£95.



2858. A simple bowl of dignified form carved  
in rich green jade.  
*Diameter 6½ ins.*  
KIEN-LUNG, 1736-1795.  
**£75.**



2091. Incense-burner of archaic type carved  
from a single piece of fine grey-green jade.  
*From the collection of the Prince  
Kung Pu Wei. Height 6 ins.*  
MING Dynasty, 1368-1643.  
**£40**



3021. Jade box of superb quality and technique, the whole surface being pierced in openwork. The inside is lacquered in gold and decorated with the Symbols of Happy Augury.  
*Diameter 6½ ins.*  
Early 18th Century.  
**£145.**



785. Table screen and stand, both of superlative quality. The back of the screen has a branch of applied foliage finely carved. From the Summer Palace, Peking. Height 23½ ins. Dated HSÜAN-T'É, 1426-1435.

£275.



802. Picnic box of very rare type, the concave section of each side being lacquered black and inlaid with mother-of-pearl. Mother-of-pearl inscription in base reading "For use after washing."  
*Height 6 ins.*  
MING Dynasty, 1368-1643.  
£57.



801. Box carved with a bold design of flowering peonies in rich red on a buff ground.  
*Diameter 12½ ins.*  
Dated YUNG-LO, 1403-1424  
£175.



643. Box of quatrefoil shape  
decorated with gourds  
in tinted lacquer.  
*Length 3½ ins.*  
KIEN-LUNG, 1736-1795.  
£5.



750. Box of charming design  
and warm red colour.  
The sides are occupied  
with a deeply and  
boldly carved key  
pattern.  
*Diameter 2¼ ins.*  
MING Dynasty, 1368-1643.  
£12.



661. Box of rich red colour  
carved with an Immortal  
and his attendant.  
*Diameter 2½ ins.*  
KIEN-LUNG, 1736-1795.  
£8.



683. Square box, the lid  
carefully decorated with  
the sacred Wheel of the  
Law amidst waves.  
*2½ ins. square.*  
KIEN-LUNG, 1736-1795.  
£9.





763. Jardinière of square form, each side having a design of flowering plants in red on a dark green ground.  
 Height 4½ ins.  
 KIEN-LUNG, 1736-1795.  
 £35.



812. Incense-burner of a fine rich red deeply carved.  
 Height 5½ ins.  
 18th Century.  
 £37.



799. Fan-shaped box, the lid decorated with a landscape of exceptional technique and beauty. Width 13½ ins.  
 KIEN-LUNG, 1736-1795.  
 £65.



755. Box of important size and superlative quality carved with auspicious symbols in *four* colour lacquer—red, green, buff and aubergine—the sides having figure and landscape panels. From the Summer Palace, Peking, 1860.

*Diameter 20½ ins.*  
Early 18th Century.

£275.



783. Box of a fine deep red decorated with lychees.  
*Diameter 3½ ins.*  
 KIEN-LUNG, 1736-1795.  
**£16.**



658. Box shaped as a *ju-i* or sceptre head. Fine colour.  
*Width 4½ ins.*  
 KIEN-LUNG, 1736-1795.  
**£12.**



662. Box in the form of a peach, the Taoist symbol of longevity, and carved with bats, the emblems of good fortune. A charming example.  
*Length 4 ins.*  
 18th Century.  
**£12.**



792. Box boldly carved in warm red with prunus sprays on both sides.  
*Diameter 3 ins.*  
 KIEN-LUNG, 1736-1795.  
**£15.**



761. Vase lacquered in rich red on porcelain and carved with an Immortal in a landscape and inscribed with two Imperial eulogies.<sup>2</sup> Extremely rare and fine. Height 13½ ins.  
KIEN-LUNG, 1736-1795.  
**£125.**

\* Translation on request.



746. Vase of important size and exceptional quality with a figure and landscape panel on each side. Height 14½ ins.  
KIEN-LUNG, 1736-1795.  
**£95.**



774. Box depicting Buddhist lions sporting with a ball, the edge of the lid and the sides carved with an unusual rope pattern. *Width 6½ ins.*  
Dated KIEN-LUNG, 1736-1795.  
£42.



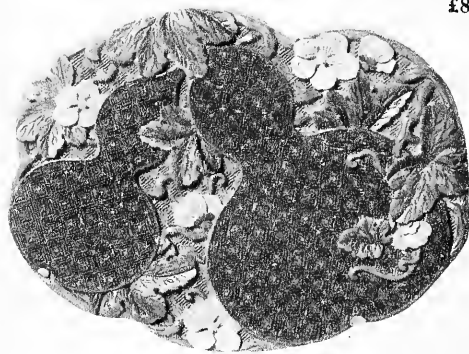
816. A finely carved box decorated all over with flowers and butterflies in rich red on a buff ground.  
*Diameter 5¼ ins.*  
KIEN-LUNG, 1736-1795.  
£22.



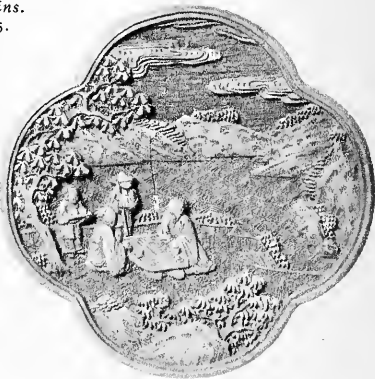
782. Bowl and cover, decorated with peaches and the sacred fungus in red, green and buff lacquer.  
*Height 3¼ ins.*  
KIEN-LUNG, 1736-1795.  
£37.



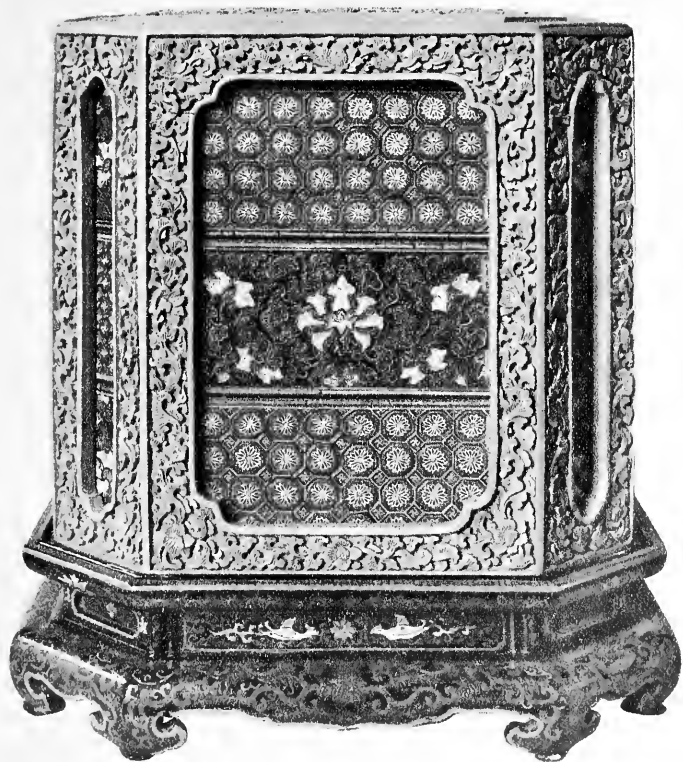
730. Vase and stand of exceptional technique and very rich colour. Height 15 ins.  
KIEN-LUNG, 1736-1795.  
£87.



815. Box of irregular outline decorated with gourds and flowers in tinted lacquers of unusually bright and pleasing colours.  
Width 4½ ins.  
KIEN-LUNG, 1736-1795.  
£9.



678. Box of quatrefoil shape and fine colour. Width 4½ ins.  
18th Century.  
£12.



850. Pair of Imperial picnic boxes and stands of superb quality. The openwork covers are in finest red, the divisions in variously coloured inlaid lacquers and the stands black, painted in lacquer with floral sprays. Museum specimens.

*Height 9½ ins.*

KIEN-LUNG, 1736-1795.

£275.

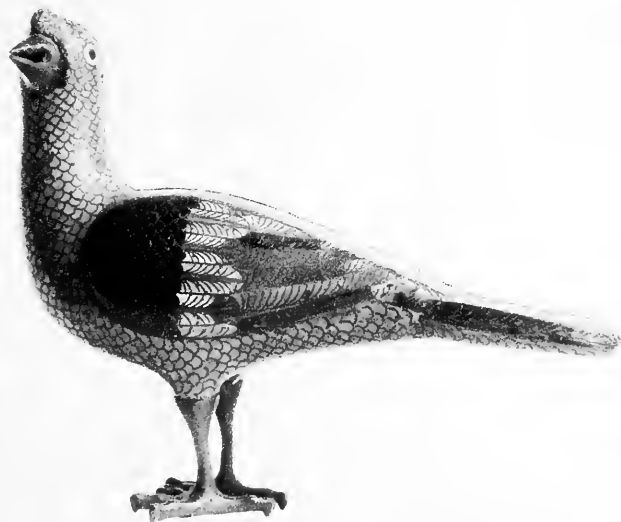


104. Incense-burner of the highest quality with a fine turquoise-blue ground decorated with archaic designs in lapis-lazuli blue. Height 21 ins.  
KIEN-LUNG, 1736-1795.  
£175.





235. Bowl with formal flowers  
in colours on a fine blue  
ground. *Diameter 12½ ins.*  
MING Dynasty, 1368-1643.  
£29.



252. Pair of birds of fine quality with turquoise  
ground and vari-coloured wing  
and tail feathers.  
KIEN-LUNG, 1736-1795.  
£28.



238. Plate with scroll foliage  
in colour on a white  
groundwork.  
*Diameter 7 1/4 ins.*  
KIEN-LUNG, 1736-1795.  
£11.



250. Pair of candlesticks decor-  
ated with flowering trees in  
green, yellow, etc., on a  
delicate blue ground.  
*Height 9 ins.*  
17th Century.  
£27.



251. Incense-burner in the form of a mythical  
animal, the body of an unusual lavender  
blue with touches of green and red.  
*Height 12 ins.*  
KIEN-LUNG, 1736-1795.  
£48.



1381. Pair of dishes of the finest quality, the front decorated with flowers in the famille-rose taste and the back with scroll foliage and dragons in colours on an Imperial yellow ground. *Diam.* 10½ *ins.*

KIEN-LUNG, 1736-1795.

£110.



1181. Bowl of elegant form with a rich *rose du Barri* ground painted with birds and flowers and with gilt dragons on the shoulders. An extremely rare specimen. *Height 3½ ins.*  
Early 18th Century.  
£95.



437. Tray of quatrefoil shape, finely decorated on a white ground with figures in the European taste. *Width 12½ ins.*  
KIEN-LUNG, 1736-1795.  
£22.



994. Vase with a brilliant 'powder-blue' ground and three panels reserved in white painted with birds and flowers. Very uncommon. Height 6 ins.  
KIEN-LUNG, 1736-1795.  
£30.



1380. Vase with an Imperial yellow ground brilliantly painted with quail among millet. A Museum specimen. Height 4½ ins.  
Dated KIEN-LUNG, 1736-1795.  
£35.



1185. Box of shallow oblong form with lid of pierced gilded metal. The body has four fine panels of birds and flowering trees. Height 3½ ins.  
KIEN-LUNG, 1736-1795.  
£47.



1411. Incense-burner decorated with panels of figures in the European taste. *Height 2½ ins.*  
KIEN-LUNG, 1736-1795.  
£25.



1322. Bowl with four landscape panels surrounded by freely painted flower sprays.  
*Diam. 4½ ins.*  
KIEN-LUNG, 1736-1795.  
£15.



1257. Tray, finely painted with equestrian figures on a white ground. *Width 12 ins.*  
18th Century.  
£25.



1374. Bowl with Imperial yellow ground and foliage in famille-rose. A beautiful specimen.

*Diam. 6 ins.*

KIEN-LUNG, 1736-1795.

£40.



1376. Pair of dishes with famille-rose flowers on a white ground. The entire back is Imperial yellow with utensils in colours.

*Diam. 8½ ins.*

KIEN-LUNG, 1736-1795.

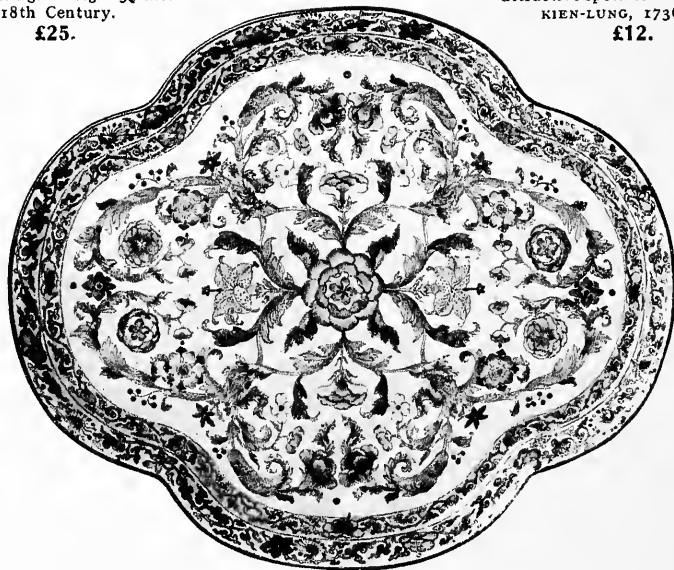
£45.



990. Bowl and cover with panels of flowers enclosed by mauve and pink borders. Very unusual colouring. *Height 3½ ins.*  
18th Century.  
**£25.**



1395. Wine vessel with floral panels surrounded by brownish-pink and green borders. A very attractive specimen. *Height 7 ins.*  
KIEN-LUNG, 1736-1795.  
**£12.**



1409. Tray of quatrefoil shape with conventional flowers and leaves in colours on a white ground. *Width 10¼ ins.*  
KIEN-LUNG, 1736-1795.  
**£22.**





1362. Table, the body and cabriole legs in black and gold lacquer, the whole inset with panels of finest Canton enamel. A Museum specimen of great rarity.

*Width 33½ ins., height 29½ ins.*

KIEN-LUNG, 1736-1795.

£225.



1372. Plate decorated in colours in the Chinese taste on a white ground. *Diam. 8½ ins.*

KIEN-LUNG, 1736-1795.

£18.



1296. Bowl with a continuous panel of landscape and figures. *Diam. 7½ ins.*

18th Century.

£27.



1370. Wine vessel of superlative quality. This extraordinary piece, decorated in soft colours on a white ground, is admitted to be one of the finest examples of this type of Chinese Art to be found in Europe and is inscribed with the personal name of the Emperor Kien-Lung. *Total height, including stand, 4½ ins.*

KIEN-LUNG, 1736-1795.

£175.



131. Landscape of great artistic merit in shaded grey and pink soapstone. *Width 12 ins.*  
18th Century.  
£27.



129. Seated figure of a man smiling. An old carving of considerable charm and fine brown colour *Height 3½ ins.* 17th Century. £16.



100. Seated Bodhisattva in mottled grey soapstone on a white marble base. *Height 5½ ins.* 18th Century. £9.



121. Lady seated at a table. A fine carving with traces of original colour. *Height 5½ ins.* KIEN-LUNG, 1736-1795. £12.



136. Standing figure of a sage in yellowish steatite mottled with red. *Height 7½ ins.* 18th Century. £12.



128. Liu Han riding on the three-legged toad of immortality. A fine carving with traces of colour.

*Height 4 ins.*  
KIEN-LUNG, 1736-1795.  
£12.



111. Group of mythical animal and young in mottled red steatite. *Width 4½ ins.*

KIEN-LUNG, 1736-1795.  
£16.



126. Pair of Buddhist lions in rich even brown soapstone. Unusual colour.

*Height 6½ ins.*  
18th Century.  
£37.



123. Vase of first importance with panels of landscape heightened with gilding, the whole carved from a single piece of cream coloured soapstone richly veined with red. Height 16½ ins. Early 18th Century.  
£175.



27. An Imperial panel of superb quality carved from a three-coloured slab of lime-stone—aubergine, green and pale buff, which natural colours are skilfully utilised to enrich the beauty of the work. A Museum specimen.

*Height 40 ins., width 30 ins.*  
18th Century.

£425.



194. Rock crystal figure of a Buddhist lion. An extremely rare example and probably of Tibetan origin. *Height 4 ins.*  
17th Century.  
**£110.**



200. Brush rest in rock crystal carved as mountains with dragons and waves. *Height 8½ ins.*  
17th Century.  
**£65.**





196. Pink crystal vase of very fine colour in the form of a mythical animal.  
*Height 8 ins.*  
18th Century.  
£125.



170. Brown stone carving of the fungus of longevity in a stand of translucent brown agate.  
*Height 7½ ins.*  
18th Century.  
£37.



178. Carving in pale brown aventurine of a standing sage carrying a flute. *Height 7 ins.*  
18th Century.  
£10.



3004. An exquisite and probably unique pair of Imperial bowls in black serpentine with clouds of translucent green, incised in gilt characters with poems on Spring composed by the Emperor Kien-Lung and dated 1764 A.D. From the Summer Palace, Pekin. *Diam. 5 ins.*  
18th Century.  
£275.



171. Agate bowl of the finest quality, carved from a block of translucent brown and pale lavender. A Museum specimen.  
*Diam. 5½ ins.*  
KIEN-LUNG, 1736-1795.  
£75.



49. Vase of important size carved from one piece of rich brown jasper with a natural layer of dark green on each side. Probably unique. From the collection of Sir William Bennett. Height 10 ins. 18th Century.

£375.



30. Pu-tai, god of Contentment, in a beautiful amber-coloured agate. On wood stand inlaid with silver.

Height of figure 3 ins.  
KIEN-LUNG, 1736-1795.

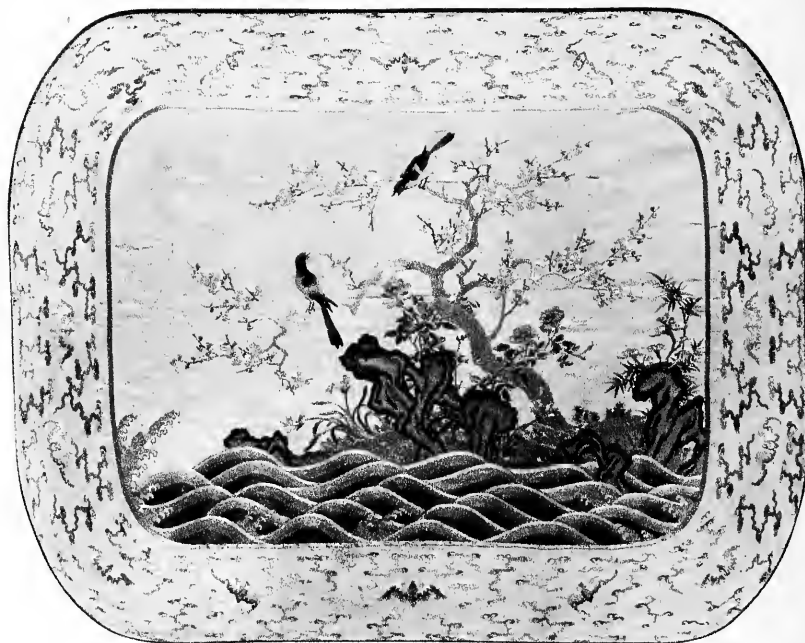
£27.



43. Malachite group of Pu-tai, accompanied by children. Fine colour and technique. Height 2½ ins.

Late 18th Century.

£37.



234. Panel of Imperial yellow silk brilliantly embroidered in colours  
From the Throne Room of the Summer Palace, Pekin  
Sight size of panel: 52 ins. × 41½ ins.  
KIEN-LUNG, 1736-1795.  
**£195.**

*We have usually a few very choice examples of old  
Chinese fabrics—velvets, brocades, etc.—in stock,  
photographs and particulars of which  
will be gladly sent on request.*



252. Reclining figure of a sage, in dark port wine coloured amber, with a vase behind hollowed out to form a table snuffbottle. An important and rare example. *Height 2½ ins.*  
Early 18th Century.

£25.



209. The god of Contentment, carved in fine deep orange red. *Height 4 ins.*  
KIEN-LUNG, 1736-1795.  
£25.



251. Openwork carving in translucent brown amber with a tiger, dragon, etc., among cloud pattern. Very fine technique. *Height 4 ins.*  
KIEN-LUNG, 1736-1795.  
£14.



512. Jade bottle, splashed with emerald green and carved in low relief with a dragon. *Height 2½ ins.*  
KIEN-LUNG, 1736-1795.  
**£8.**



386. Jade bottle carved in yellowish-green with a tree and deer in pale brown matrix. *Height 2½ ins.*  
KIEN-LUNG, 1736-1795.  
**£10.**



527. Cloisonné enamel bottle with rich turquoise-blue ground. Rare. *Height 3 ins.*  
KIEN-LUNG, 1736-1795.  
**£16.**

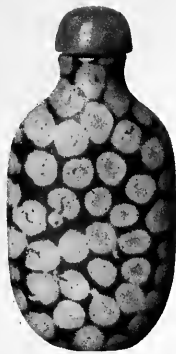


315. Canton enamel bottle with a green brocade ground and a yellow and pink scarf tied around the centre. Rare. *Height 2 ins.*  
KIEN-LUNG, 1736-1795.  
**£18.**



339. Carved ivory bottle finely coloured. *Height 2½ ins.*  
Late 18th Century.  
**£8.**

SNUFFBOTTLES



533. Bottle carved from fossilized coral. A most attractive and unusual specimen. From the Gordon Smith Collection. Height 2½ ins. KIEN-LUNG, 1736-1795. £8.



535. Malachite bottle of unusually fine colour. Height 2 ins. KIEN-LUNG, 1736-1795. £7.



532. Ruby glass bottle, deeply carved with the Signs of the Zodiac. From the Gordon Smith Collection. Height 3 ins. KIEN-LUNG, 1736-1795. £7.



496. Translucent agate bottle, with brown mottlings carved in low relief as a lotus. Height 3 ins. KIEN-LUNG, 1736-1795. £4.



534. Snuffbottle of 'pudding' stone. A fine example with bold markings. From the Gordon Smith Collection. Height 3 ins. KIEN-LUNG, 1736-1795. £7.



1285. Kwan-yin, goddess of Mercy, in her rôle as protector of children. A superb carving of great dignity and restraint, finely patinated by age to a rich velvety brown. *Height 13 ins.*  
MING Dynasty, 1368-1643.

£97.





1260. Vase decorated with a landscape etched in black. Height 4½ ins.  
KIEN-LUNG, 1736-1795.  
£7.



1294. Group of goats, very finely carved and patinated. On a green ivory stand. A Museum specimen. Length 3½ ins.  
18th Century.  
£22.



848. Old man carrying a child. A simple carving of rich brown colour. Height 4 ins.  
KIEN-LUNG, 1736-1795.  
£5.



1242. Kwan-yin, goddess of Mercy, seated on a rock. A very carefully finished figure. Height 3½ ins.  
Early 18th Century.  
£24.



216. Water vessel shaped as a mythical animal and inlaid with gold and silver.  
*Height 3 ins.*  
 MING Dynasty, 1368-1643.  
**£15.**



367. Boy carrying a cock, a finely finished example, partly gilded. *Height 5½ ins.*  
 MING Dynasty, 1368-1643.  
**£12.**



375. Reclining Sage resting his arm on a wine jar. A well-modelled figure with engraved robes.  
*Height 7½ ins.*  
 18th Century.  
**£18.**



438. Vase of quadrangular form, delicately inlaid with silver.  
*Height 6½ ins.*  
 KIEN-LUNG, 1736-1795.  
**£8.**



1139. Blue and white dish of brilliant quality and colour, formerly  
in the Collection of J. McNeil Whistler. Diam. 14½ ins.  
KHANG HSI, 1662-1722.  
£75.



1214. Wine vessel in blue and white porcelain with reticulated panels below which is an inner body painted with floral designs.

A Museum specimen.  
 Height 5 ins.  
 KHANG HSI, 1662-1722.

£37.



1138. Famille verte ginger jar of important size enamelled with panels of utensils.

Height 14 ins.  
 KHANG HSI, 1662-1722.

£108.



1267. Blue and white ginger jar and cover of fine colour. An imposing specimen.

Height 9½ ins.  
 KHANG HSI, 1662-1722.

£32.



1018. Blue and white bowl and cover with panels of flowers of exceptional brilliance.

Height 6½ ins.  
 KHANG HSI, 1662-1722.

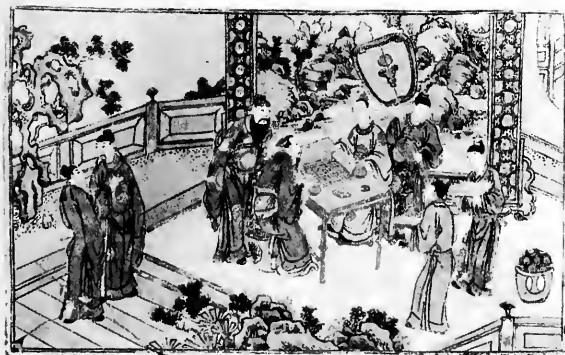
£25.



1073. Famille verte vase decorated with vases, etc. Height 5½ ins.  
KHANG HSI, 1662-1722.  
£17.



576. Famille verte bowl with 'café au lait' panels, each decorated with an animal, inset on a ground covered with an impressed rectangular design enamelled in green. Diam. 7 ins.  
KHANG HSI, 1662-1722.  
£25.



893. Four famille verte panels enamelled with landscapes in brilliant colours and with lotus scroll celadon backs. Width 10½ ins.  
KHANG HSI, 1662-1722.  
£35 each.



788. Wall-vase of good quality and fine condition. Height 8½ ins.  
KHANG HSI, 1662-1722.  
£22.



462. Famille rose dish decorated in soft colours in the Chinese taste.  
*Diam.* 6½ ins.  
 KIEN-LUNG, 1736-1795.  
**£18.**



560. Famille rose dish with a charming and unusual subject. A Museum specimen.  
*Diam.* 7½ ins.  
 Early 18th Century.  
**£27.**



435. Pair of shaped famille rose plates of fine quality and rich colouring.  
*Diam.* 9 ins.  
 KIEN-LUNG, 1736-1795.  
**£25.**



474. Famille rose ewer of important size, finely enamelled with flowers and butterflies. *Height* 9 ins.  
 KIEN-LUNG, 1736-1795.  
**£35.**



1259. Vase of dignified form covered with a rich green glaze. *Height 13 ins.*  
MING Dynasty, 1368-1643.  
£47.



1150. Tu ting bowl with pale creamy glaze. *Height 4 ins.*  
SUNG Dynasty, 960-1279.  
£17.



1181. Bowl of Kuluhsien ware, the upper half covered with an old ivory coloured glaze with black crackle. *Height 4½ ins.*  
SUNG Dynasty, 960-1279.  
£42.



1260. Green glazed water vessel shaped as a peach.  
 Height  $3\frac{1}{2}$  ins.  
 17th Century.  
**£17.**



1211. Reclining figure of a ram partly covered with a pale yellow glaze. Length  $4\frac{1}{2}$  ins.  
 SUNG Dynasty, 960-1279.  
**£7.**



1196. Elephant glazed in cream, green and orange. A Museum specimen of important size. Height  $13\frac{1}{2}$  ins.  
 MING Dynasty, 1368-1643.  
**£75.**



1250. Cylindrical bowl with iridescent green glaze supported on three feet modelled as bears. Diam. 8 ins.  
 HAN Dynasty, 206 B.C.—220 A.D.  
**£35.**

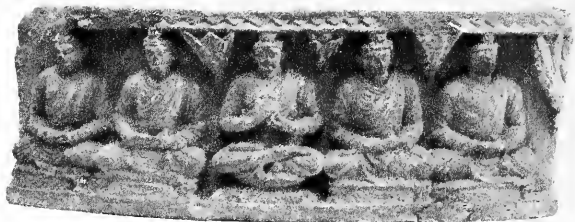




50. Inscribed\* stone votive stele made by the Buddhist disciple  
Yuan-I-yu in the year 662 A.D.  
*Height 30 ins.*  
TANG Dynasty.  
£225.

\*Inscription reads :

" Lung So, 2nd year (662 A.D.) 12th month, 15th day :  
the Buddhist disciple Yuan-I-yu, his wife Wang and  
daughter Ming-hui, on behalf of his father and mother  
(i.e., Yuan-I-yu's) and all those who dwell in the realms  
of Law reverently caused to be made this stone."



261. Græco-Buddhist stone panel with a seated figure of Gautama and four disciples.

*Width 15 ins.*

*C. 100—200 A.D.*

**£35.**



51. Græco-Buddhist stone frieze showing duplicated figures of Sakya-muni seated under the Bo tree with attendant disciples. *Length 26 ins.*

*C. 100-200 A.D.*

**£100.**



52. Græco-Aryan stone sculpture of the Buddha. A strong carving of fine quality.  
 Height 11½ ins.  
 C. 100-200 A.D.  
 £125.



17. Chinese stone head of a Bodhisattiva. Height 3½ ins.  
 Sung Dynasty, 960-1279.  
 £17.



307. Græco-Aryan seated figure of the Buddha with attendant.  
 Height 7 ins.  
 C. 100-200 A.D.  
 £22.



28. Chinese stone carving of oblong form sculptured with four figures in niches, inscribed\* and dated 1149 A.D.  
 Height 6 ins.  
 Sung Dynasty, 960-1279.  
 £37.  
 \*Translation on request.



115. Mountainous landscape beautifully carved with figures and trees in full relief. A Museum specimen. *From the Trapnell Collection. Height 10½ ins. 18th Century. £27.*



124. Group of Buddhist lions sporting on a rock with a ball of brocade. *Height 9½ ins. KIEN-LUNG, 1736-1795. £18.*



123. Figure of a man accompanied by toads. A boldly carved specimen. *Height 15½ ins. 18th Century. £9.*



114. Spill-vase with a continuous landscape-and-figure panel. *Height 4½ ins.*  
KIEN-LUNG, 1736-1795.  
**£12.**



126. Cricket cage carved in openwork with a mountainous landscape and deer. A charming example of fine technique.  
*Height 9 ins.*  
18th Century.  
**£12.**



711. Seated figure of a Tibetan lama lacquered in rich gold and dark brown. A Museum specimen. *Height 8½ ins.*  
Early 18th Century.  
**£18.**



122. Standing figure of a lady. A strong and simple carving of unusual type.  
*Height 12 ins.*  
Early 18th Century.  
**£18.**



750. Superb carving of Daruma, founder of the Zen sect of Buddhism, standing on the waves. A masterpiece of ivory sculpture. *Height 12 ins.*  
Signed, TOYORAKU.  
**£175.**



965. A lady carrying a branch of wistaria and a demon grasping her robe. Exquisitely finished in every detail. *Height 4½ ins.*  
Signed, ISHINSAI SHIRUAKI.  
**£30.**



966. A group showing the famous horseman Oguri Hangwan riding his horse on to a 'Go' table. *Height 3½ ins.*  
Signed, SEIMIN.  
**£18.**



865. An old peasant reading by the light of a lantern. A charming well carved subject. *Height of figure 7¼ ins.*  
Signed, GUNO.  
**£18.**



1004. A girl holding a broom with a kitten playing at her feet. *Height 6 ins.*  
**£19.**



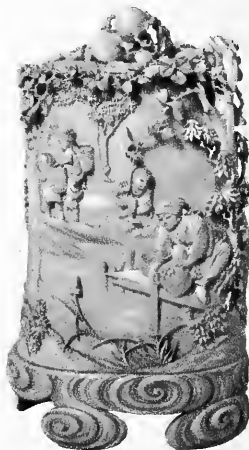
1010. A kneeling child with a doll fastened to her back. Height 3½ ins. Signed, DOSAI. £18.



1116. Seated figure of Daruma, founder of the Zen sect of Buddhism. Height 2½ ins. Signed, SOSAI. £8.



866. Standing figure of a street performer with puppets. Good quality. Height 8½ ins. Signed, MITSUMENE. £15.



696. Jar and cover finely carved in high relief with figures in a landscape. An important example of rare technique. Height 9 ins. £35.





1124. Superb carving of a seated bear. An exceptionally large and fine specimen. *From the McCulloch Collection. Height 6½ ins.*  
Signed, ICHIKAWA MITSUAKI.  
£95.



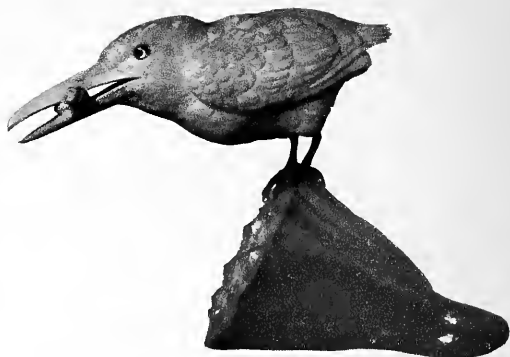
1147. Group of elephants, skillfully modelled and finished with extreme care.  
*Height 4½ ins.*  
Signed, KOYOKU  
£35.



1031. Standing figure of a priest, a simple carving of fine quality, mounted as a lamp on an old red lacquer stand.  
*Height of carving, 9½ ins.*  
*Height of lamp, 22½ ins.*  
£80.



1179. Seal of quadrangular form, the top finely carved as a group of Immortals. A Museum specimen. *Height 5½ ins.*  
£30.



872. Kingfisher, a charming example beautifully finished. On a wood stand carved as a lotus pod.  
*Height 4½ ins.*  
Signed, KYOBI.  
£15.



800. Box and cover of fine technique, the handles carved as mythical animals and the body with a dragon.  
*Height 5 ins.*  
£21.



413. Standing figure of an old priest holding a spray of flowers in his hands. An unusual subject of great artistic merit.  
*Height 9 ins.*  
Signed, TSUNEYUKI.  
£18.



974. Group of a standing Sage with a demon crouching at his feet and holding up a tray to him. A rare subject exquisitely finished. Height 3½ ins. Signed, MUNEHARU. £22.



1012. Figure of an Immortal holding a scroll, with child attendant. Fine quality. Height 3½ ins. £12.



935. Kwanyu, god of War, on horseback. An old carving richly patinated. Height 6½ ins. Signed, HOSAI. £15.



1018. Figure of a lady dancing, holding a fan in each hand. Height 6½ ins. £18.



882. Group of Buddhist lions with  
a brocade ball.  
*Height 3½ ins.*  
£15.



677. Kneeling figure of a girl  
holding a tray. An unusually  
pleasing example carved  
with great skill.  
*Height 5 ins.*  
£19.



844. Standing figure of a peasant  
holding a bucket.  
*Height 7½ ins.*  
Signed, YOSHIYUKI.  
£22.



1100. Box and cover of important  
size, finely decorated with  
figures in high relief.  
*Height 9½ ins.*  
£18.



1244. Ivory child with a flute and basket.  
55/-



1248. Wood child riding a hobby-horse.  
Signed, ROSHMORI.  
55/-



1374. Ivory group of two children playing.  
80/-



1208. Wood hare.  
A fine and simple carving.  
85/-



1381. Wood horse.  
A choice model.  
Signed, TOMOKAZU.  
55/-



835. Wood Shoki, the demon killer. A powerful carving.  
95/-



1096. Wood dancer with red lacquered hair and ivory face.  
Signed, YEIMIN.  
75/-



1464. Wood mask of Uzume.  
Signed, SHUZAN.  
45/-



1301. Wood figure of an archer with red lacquered robes. Rare subject.  
95/-



965. Ivory Dutchman carrying a cock.  
40/-



539. Wood group of Kanshin crawling between a coolie's legs to show his bunillity. Signed, SESSAI.  
75/-



441. Ivory seated Sage holding a fan.  
75/-



1470. Ivory group of two children playing with Hotel's bag. Fine colour and patina.  
85/-



1422. Ivory rat eating a rice cake.  
60/-



725. Ivory manju pierced in openwork with a Buddhist lion and brocade ball.  
70/-



553. Ivory man with folded arms. A strong, fine carving.  
70/-



1450. Red lacquer manju. A fine specimen of rich colour.  
45/-



1024. Ivory Sage carrying a gourd tied to his staff.  
90/-

## INDEX.

### CHINESE ART.

	PAGE
AMBER . . . . .	49
BRONZE . . . . .	54
CANTON ENAMEL . . . . .	31
CLOISSONNE ENAMEL . . . . .	28
HARDSTONES . . . . .	43
IVORY . . . . .	52
JADE . . . . .	3
LACQUER . . . . .	18
PORCELAIN . . . . .	55
POTTERY . . . . .	59
SCULPTURE . . . . .	61
SNIFFBOTTLES . . . . .	50
SOAPSTONE . . . . .	39
TEXTILES . . . . .	48
WOOD . . . . .	64

### JAPANESE ART.

IVORY . . . . .	66
NETSUKES . . . . .	73

# SPINK & SON, LTD.

*Established 1772.*

*By Appointment to H.M. The King*

5, 6 & 7, KING STREET  
ST. JAMES'S  
LONDON, S.W.1

And at 16, 17 & 18, Piccadilly, W.1

Telephone :  
5337 GERRARD

Cables :  
JADEITE, LONDON

COPYRIGHT

ORIENTAL COLLECTIONS PURCHASED, ESPECIALLY  
OF JADE, PORCELAIN, LACQUER, CLOISSONNE AND  
CANTON ENAMEL.

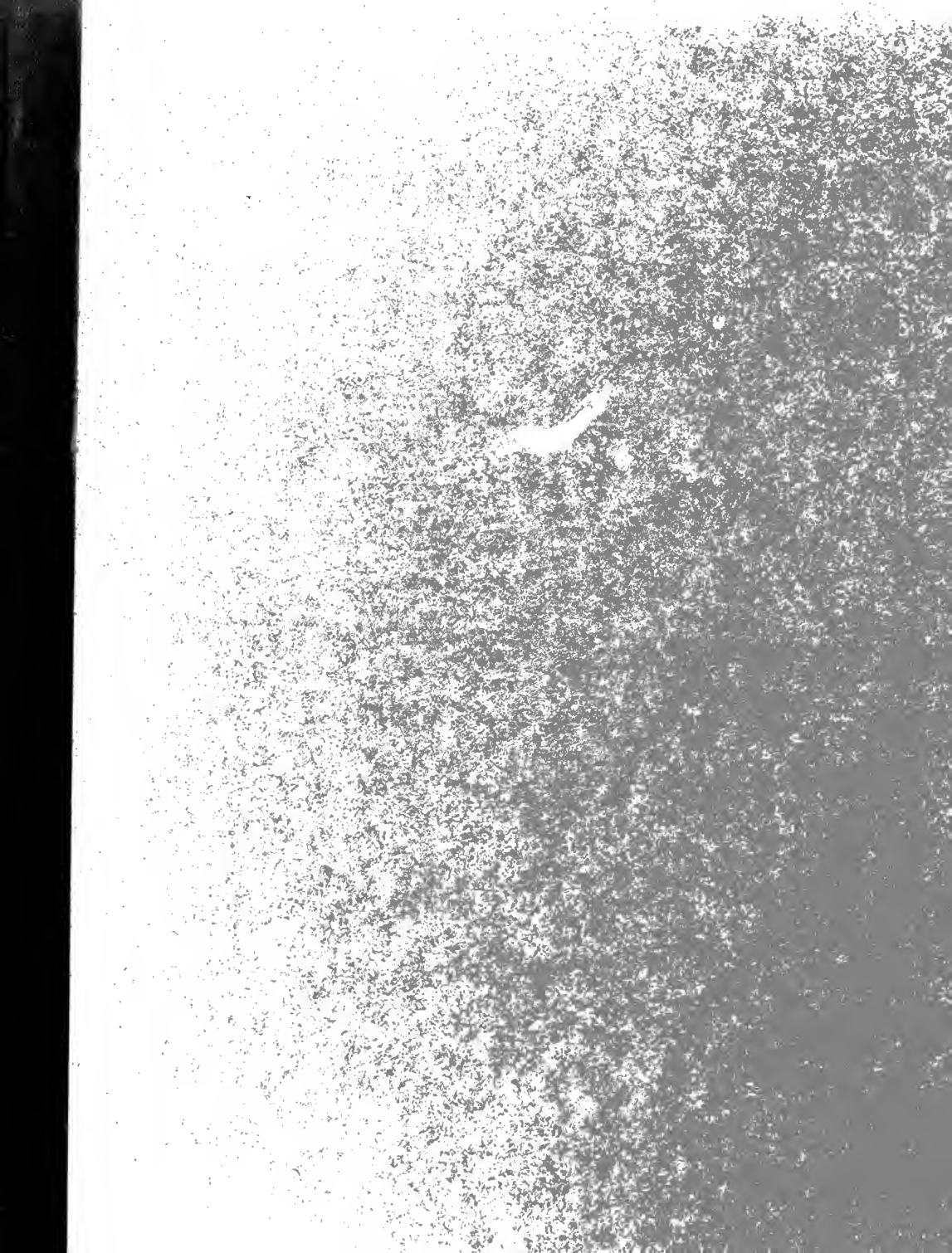
EXPERT VALUATIONS MADE FOR PROBATE, INSURANCE, ETC.

COMMISSIONS FAITHFULLY EXECUTED.









SMITHSONIAN INSTITUTION LIBRARIES



3 9088 00654 3995